

# PREMIER BUILDERS



## *Ranch Plans*

**MAINSTREET SERIES**

*Come Home to Comfort and Quality*

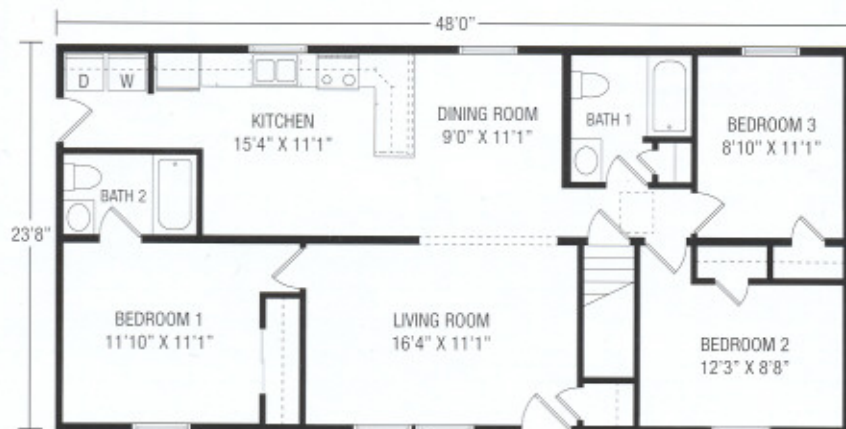


## Bradford III

### Plan No. 106

1041 SQ. FT.

Enjoy comfortable living with three bedrooms with walk-in closets, large bath, and spacious living room, dining area and kitchen.



## Winfield II

### Plan No. 120

1136 SQ. FT.

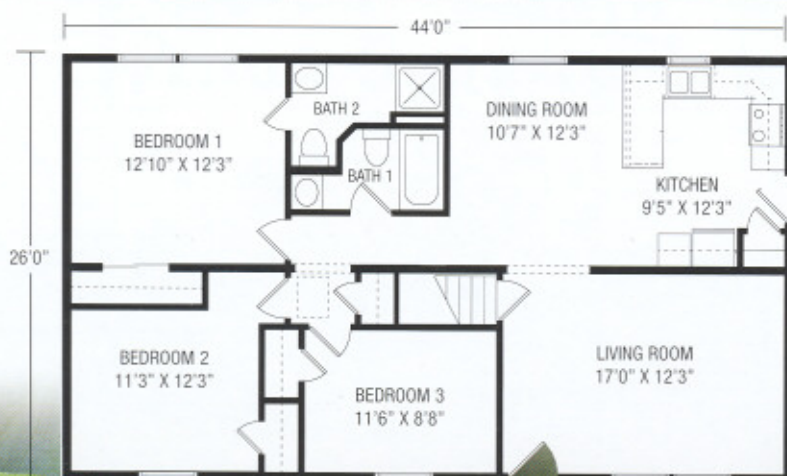
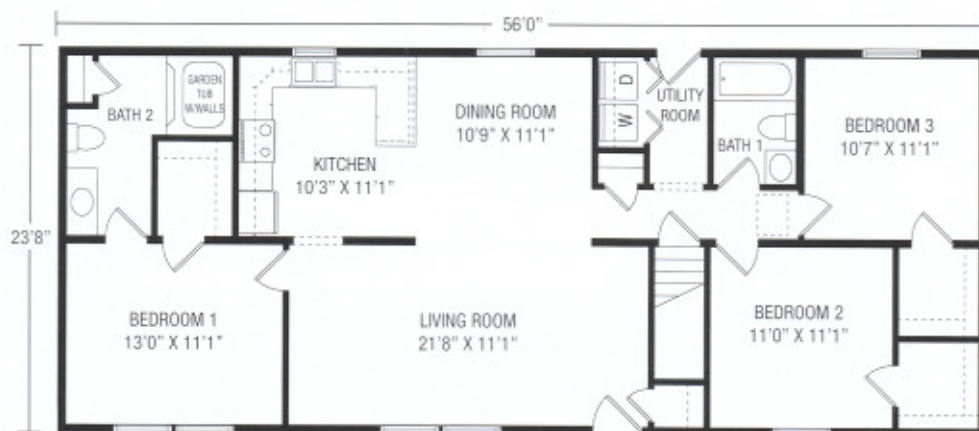
Spacious kitchen with convenient adjoining utility room, plus spacious dining room and living room perfectly complement your casual lifestyle or formal entertaining.

## Laurelwood II

### Plan No. 148

1325 SQ. FT.

Indulge in superior comfort in master bedroom suite with luxurious private bath and large walk-in closet, two additional spacious bedrooms, with walk-in closets, full bath and convenient utility room.



## Waterford

### Plan No. 214

1144 SQ. FT.

Master bedroom suite with adjoining bath, plus two additional bedrooms and full bath make this home a winner.

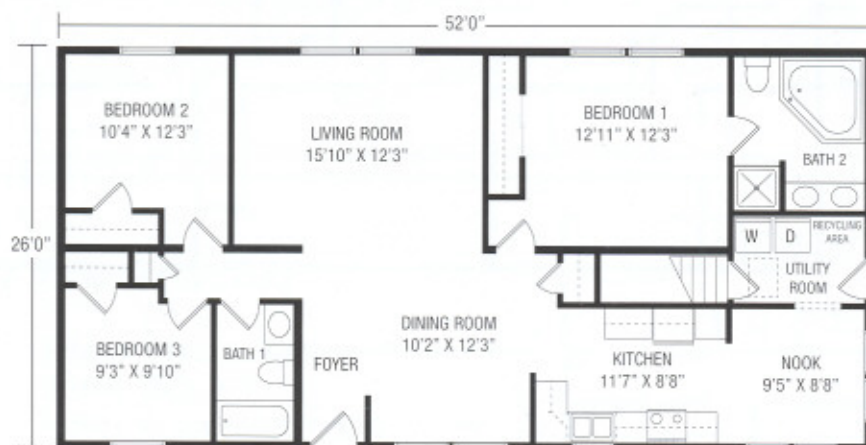


## Berkley II

### Plan No. 227

1300 SQ. FT.

Comfortable, easy living with spacious kitchen and adjoining utility room, master bedroom suite with private bath, plus two bedrooms and additional bath.



## Portsmouth II

### Plan No. 238

1352 SQ. FT.

The best of both worlds... Dine in the cozy kitchen and bright breakfast nook or enjoy the immense space created by the open living room and dining room.

## Brookville

### Plan No. 230

1404 SQ. FT.

Innovative kitchen and breakfast nook design is complemented by the traditional, formal living room.



## Saratoga II



### Plan No. 246

1456 SQ. FT.

Spacious family living featuring grand master bedroom suite with his and her closets and luxurious bath, large kitchen with adjoining sunny breakfast nook, and large family room.



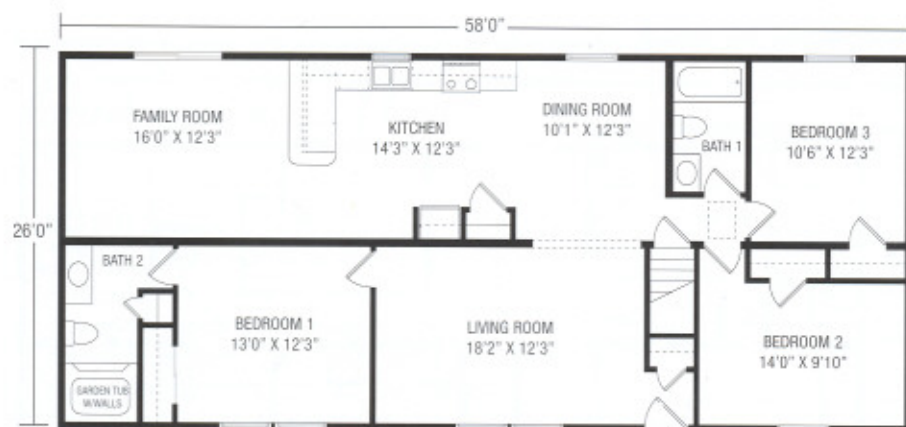
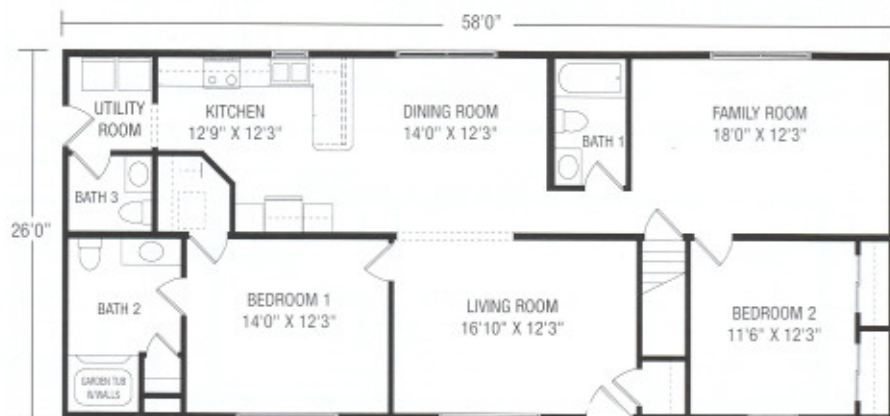


## Lincoln

### Plan No. 236

1508 SQ. FT.

Outstanding versatility with this floor plan for young family or empty nester family. Convenient laundry area, well-appointed kitchen and a spacious family room will match a variety of lifestyles.



## Lewiston

### Plan No. 248

1508 SQ. FT.

A large family will live comfortably in the spacious living room and a separate family room.

## Grandview

### Plan No. 262

1508 SQ. FT.

Step through the door into the foyer and view the expanse of space this home possesses. Desirable features abound, from the luxurious master bath to the spacious family area to the convenient access of the kitchen/utility area.







## Trenton

### Plan No. 264

1560 SQ. FT.

Luxurious master bedroom suite is one of the impressive features of this home. Efficient kitchen, bright nook and convenient washer/dryer area are added plusses.



## Henderson

### Plan No. 266

1664 SQ. FT.

Relax in comfort in the family room, coupled with a stylish kitchen, bar and nook. Convenient utility area a plus.



## Lawrence

### Plan No. 268

1664 SQ. FT.

Pamper yourself in the luxurious master bath. The open kitchen, dining room and family room add warmth.

## Concord

### Plan No. 324

1375 SQ. FT.

This floor plan provides large rooms that meet the desires of a smaller family. Walk-in closets, two full baths and a large utility room make this unequaled in efficiency.





## Richmond

### Plan No. 318

1320 SQ. FT.

Features include spacious living room and handy laundry area.



## Princeton

### Plan No. 329

1430 SQ. FT.

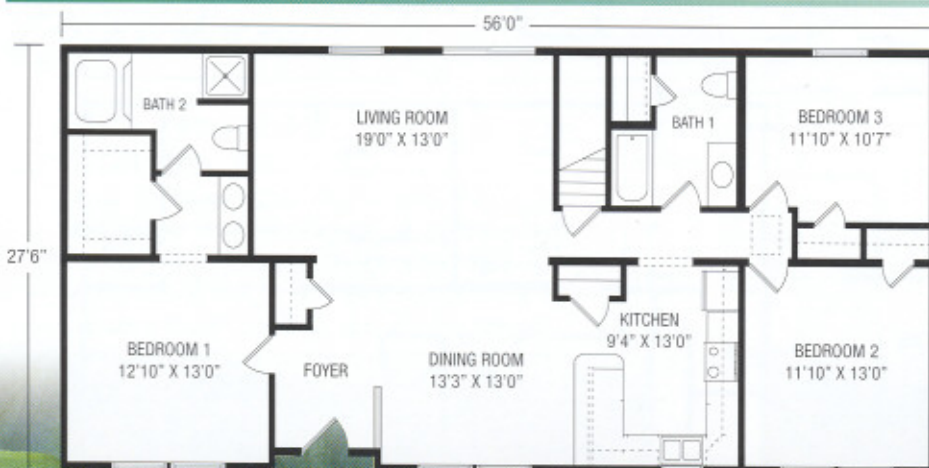
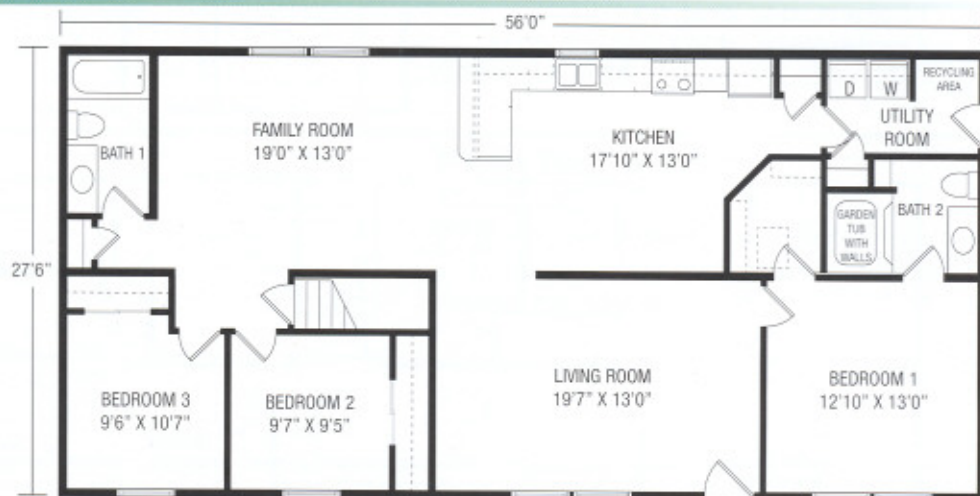
For family-style living with master bedroom with adjoining full bath and his and her closets, two additional bedrooms, full bath, large family room, and kitchen with break-fast/snack bar.

## Seville

### Plan No. 338

1540 SQ. FT.

Huge family room and living room. Convenient laundry and recycling storage area.



## Pinchurst II

### Plan No. 339

1540 SQ. FT.

Enjoy exceptional living with grand master bedroom suite with generous walk-in closet and luxurious, private bath; spacious, formal living room, and large kitchen with breakfast/snack bar.





## Auburn

### Plan No. 346

1650 SQ. FT.

Spacious living room opens to adjacent dining room.  
Laundry area off rear entry.

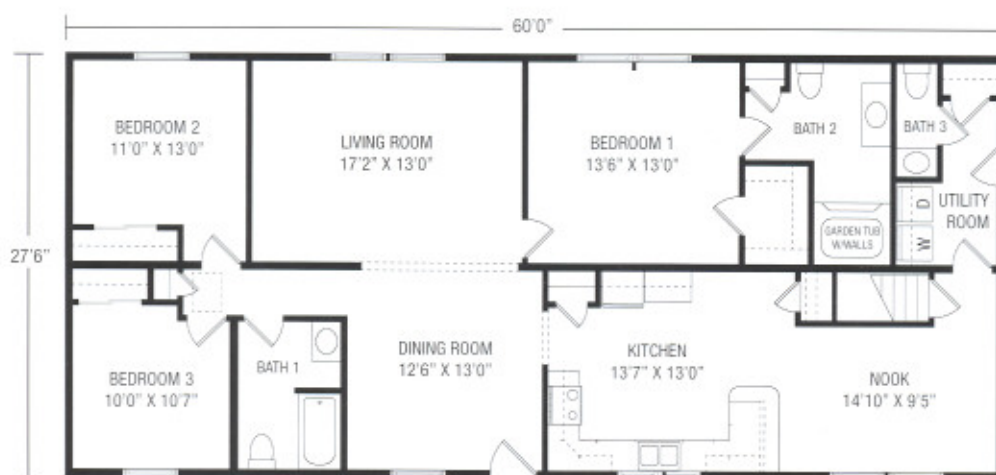
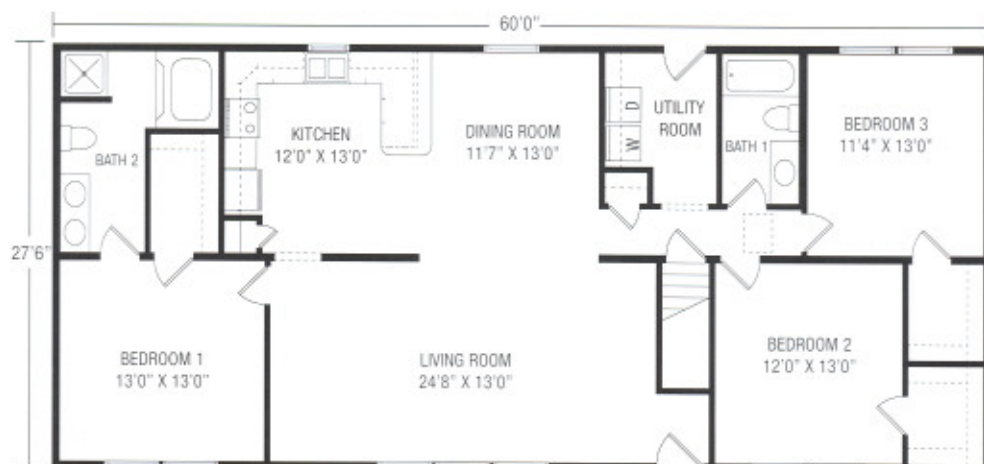


## Providence II

### Plan No. 352

1650 SQ. FT.

Indulge in luxurious space with grand master bedroom suite with generous walk-in closet and adjoining private bath, two additional bedrooms with walk-in closets, full bath, spacious living room and convenient first floor utility room.



## Manchester

### Plan No. 354

1650 SQ. FT.

Unique floor plan features kitchen with snack bar and nook, utility area with laundry area and half bath.

**Some 24 and 26 wide plans are available in expanded widths. Consult your Builder.**



# Mainstreet Series

## Tioga

### Plan No. 247

1560 SQ. FT.

Open and cheery is the mindset when entering this home. The open living area and bright nook accentuate the appeal of this plan. Four-bedrooms provide plenty of space for the growing family.



## Mayberry

### Plan No. 349

1650 SQ. FT.

This four-bedroom plan features a luxurious master bath and a spacious kitchen/dining area. Perfect for the family that desires space and convenience.



1567 PA Route 442 East  
Muncy, PA 17756

570-546-8915 • [www.premier-builders.com](http://www.premier-builders.com)



*Due to our continuing program of Product Improvement, Plans, Specifications, Materials and prices are subject to change without notice.*

*The artist's rendering(s) shown may contain optional or suggested features.*

5M HG 4/05

## Your Builder/Developer:

THE BUILDER/DEVELOPER IS AN INDEPENDENT BUSINESS-MAN, NOT AN AGENT OF PREMIER BUILDERS. From time to time, Builder/Developer may perform service work at the request of Premier Builders, but in doing so Builder/Developer is still an independent contractor and is alone responsible for the quality of his work. PREMIER BUILDERS SHALL HAVE NO RESPONSIBILITY OR LIABILITY FOR ANY ACT OR OMISSION OF BUILDER/DEVELOPER OR ANY MATERIAL PROVIDED BY BUILDER/DEVELOPER, UNDER ANY CIRCUMSTANCES.