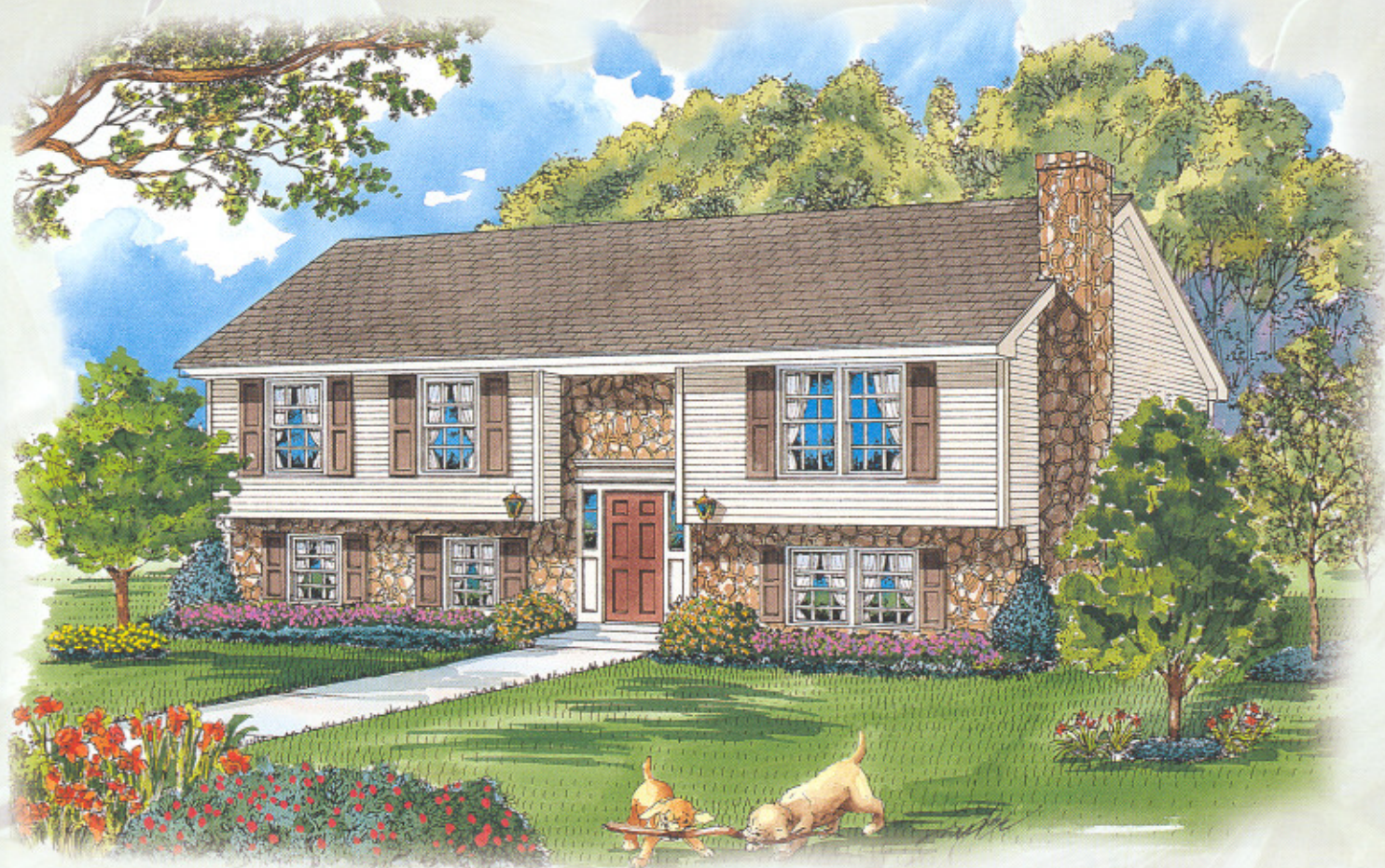


PREMIER BUILDERS



Raised Ranch

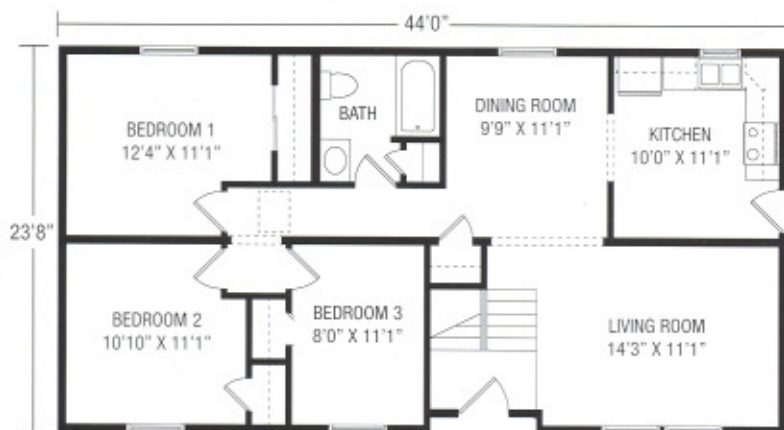
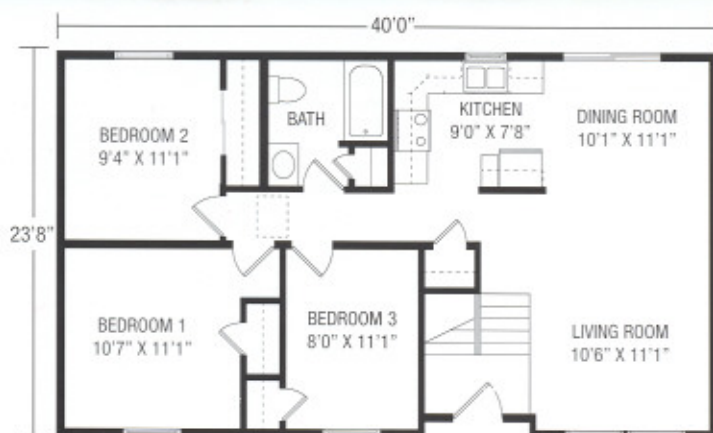
MAINSTREET SERIES
Designed for Spacious, Distinctive Living

Essex

Plan No. 105

946 SQ. FT.

A design that accentuates space. Open living room and dining room area offers expansive living space. Three large bedrooms with ample closet space and full bath provide comfortable, private surroundings.



Newville

Plan No. 107

1041 SQ. FT.

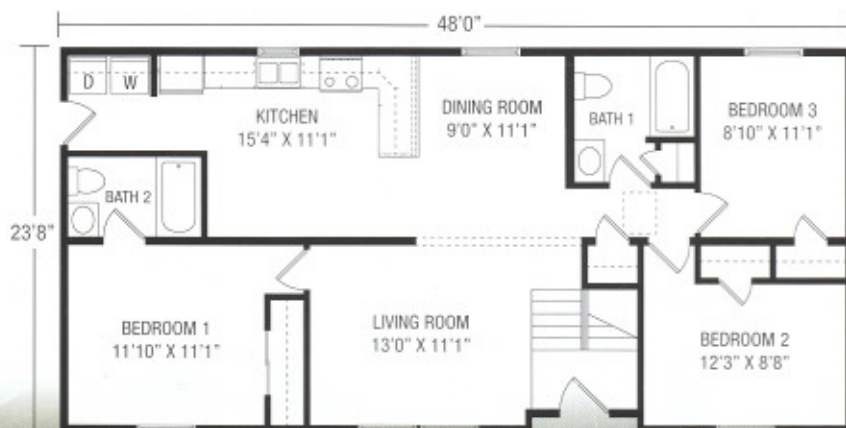
Ideal for the family who values privacy. Three bedrooms with generous closet space and full bath are nestled at a discrete distance from living room, dining room and kitchen.

Prescott II

Plan No. 121

1136 SQ. FT.

A unique floor plan offers space and privacy. Master bedroom suite with private bath is nestled away from two additional bedrooms and full bath. Expansive kitchen with convenient utility closet opens into centrally located dining room and living room.



Brunswick II

Plan No. 208

1144 SQ. FT.

An innovative design that presents endless options with the great living space created by spacious, open kitchen, dining room and living room area. Three bedrooms and spacious bath.

26'0"



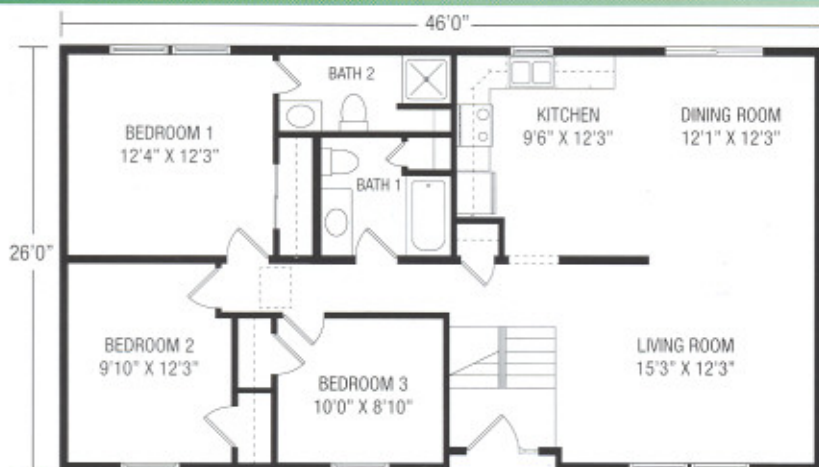
Hudson II

Plan No. 216

1196 SQ. FT.

Where families live in comfort... featuring master bedroom suite with private bath, two additional bedrooms, full bath, spacious living room and dining room and kitchen.

26'0"



Kingston II

Plan No. 228

1300 SQ. FT.

Master bedroom suite with private bath and large closet plus two additional bedrooms and full bath provide space and privacy. Unique kitchen layout with utility closet offers convenience.

26'0"



26'0"



Berkshire II

Plan No. 242

1300 SQ. FT.

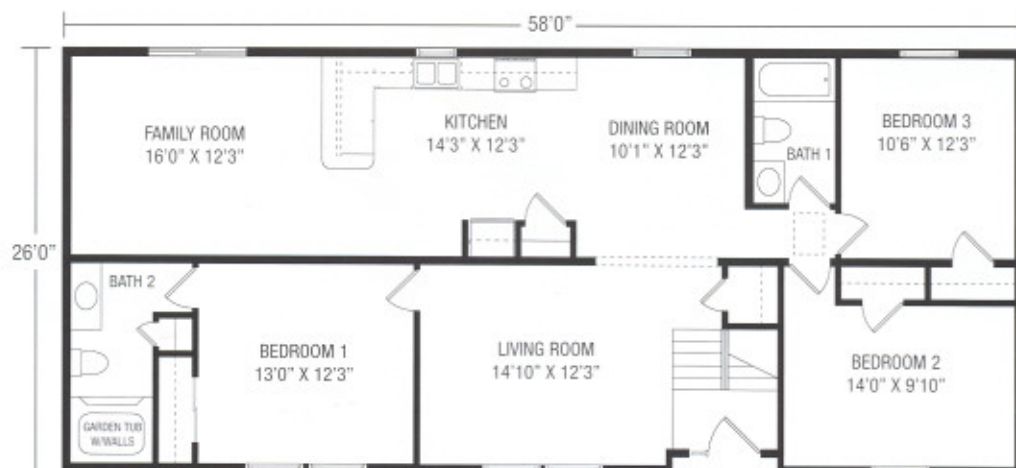
Perfect for family living with master bedroom suite with private bath and large closet, plus two additional bedrooms and full bath.

Bedford

Plan No. 249

1508 SQ. FT.

Charming comfort featuring large kitchen with bar and large family room.



Windsor

Plan No. 258

1508 SQ. FT.

Stunning great room is hallmark of this creative home that also features large kitchen with island and laundry room, master bedroom suite with private bath, plus two additional bedrooms and full bath.

Granby

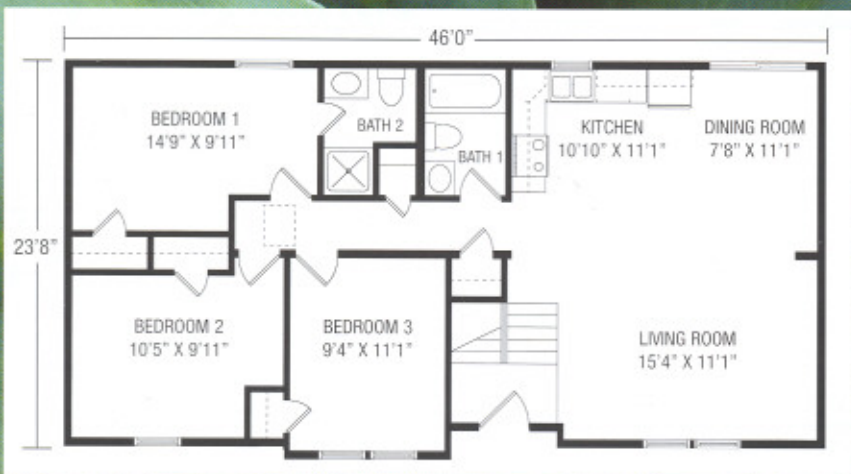
Plan No. 263

1508 SQ. FT.

Make a grand entrance through the foyer of this plan into the expansive living area. The wide open view highlights the bar area with a sit down countertop. Separate sleeping areas and a luxurious master bath round out the impressive features of this home.



Sterling



Plan No. 170 1097 SQ. FT.

Expansive, open kitchen, dining room and living room area creates impressive "Great Room." Master bedroom suite with private bath, two additional spacious bedrooms and full bath offer comfortable living.

Some 24 and 26 wide plans are available in expanded widths. Consult your Builder.



1567 PA Route 442 East
Muncy, PA 17756
570-546-8915 • www.premier-builders.com

MODULAR
BUILDING SYSTEMS ASSOCIATION
BUILDING FOR TOMORROW

Due to our continuing program of Product Improvement, Plans, Specifications, Materials and prices are subject to change without notice.

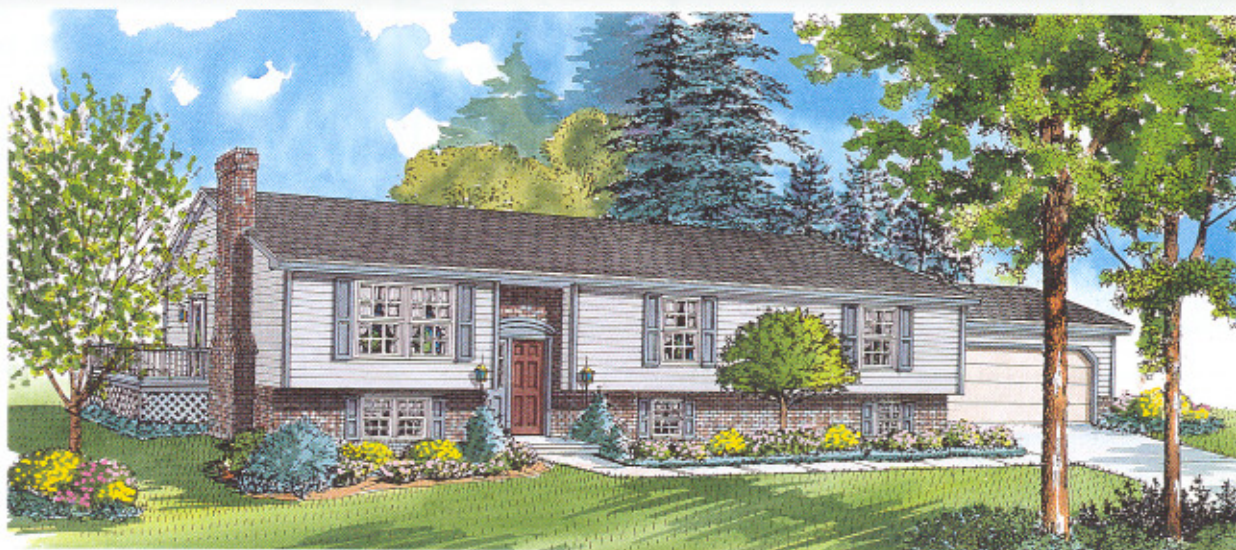
The artist's rendering(s) shown may contain optional or suggested features.

SM HG 1/02

Your Builder/Developer:

THE BUILDER/DEVELOPER IS AN INDEPENDENT BUSINESSMAN, NOT AN AGENT OF PREMIER BUILDERS. From time to time, Builder/Developer may perform service work at the request of Premier Builders, but in doing so Builder/Developer is still an independent contractor and is alone responsible for the quality of his work. PREMIER BUILDERS SHALL HAVE NO RESPONSIBILITY OR LIABILITY FOR ANY ACT OR OMISSION OF BUILDER/DEVELOPER OR ANY MATERIAL PROVIDED BY BUILDER/DEVELOPER, UNDER ANY CIRCUMSTANCES.

Mainstreet Series



Fayetteville

Plan No. 350

1540 SQ. FT.

Unique foyer creates a grand entrance to a charming, spacious living room.

