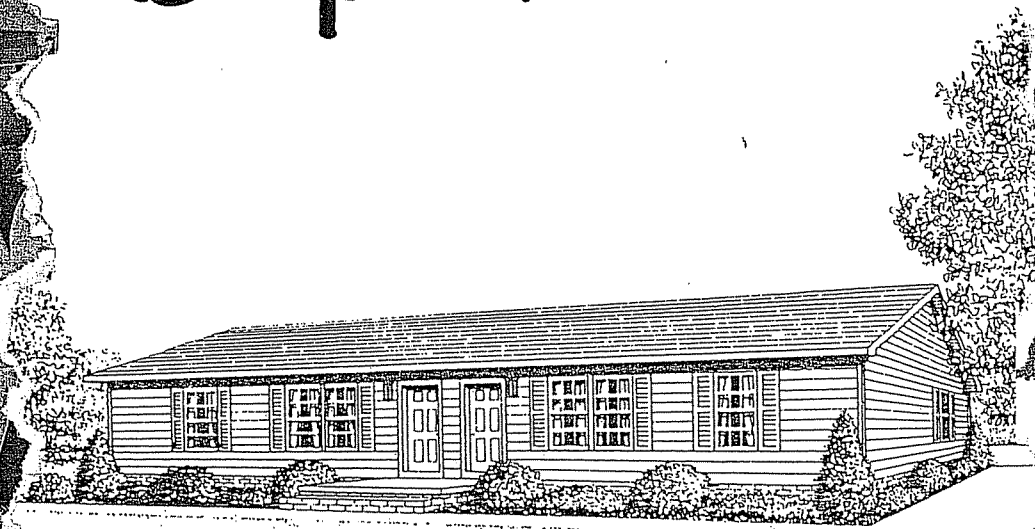
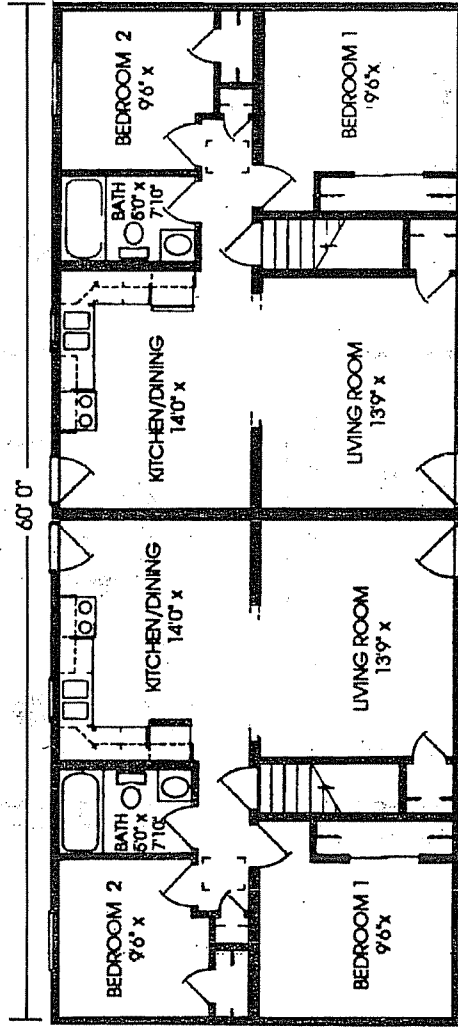
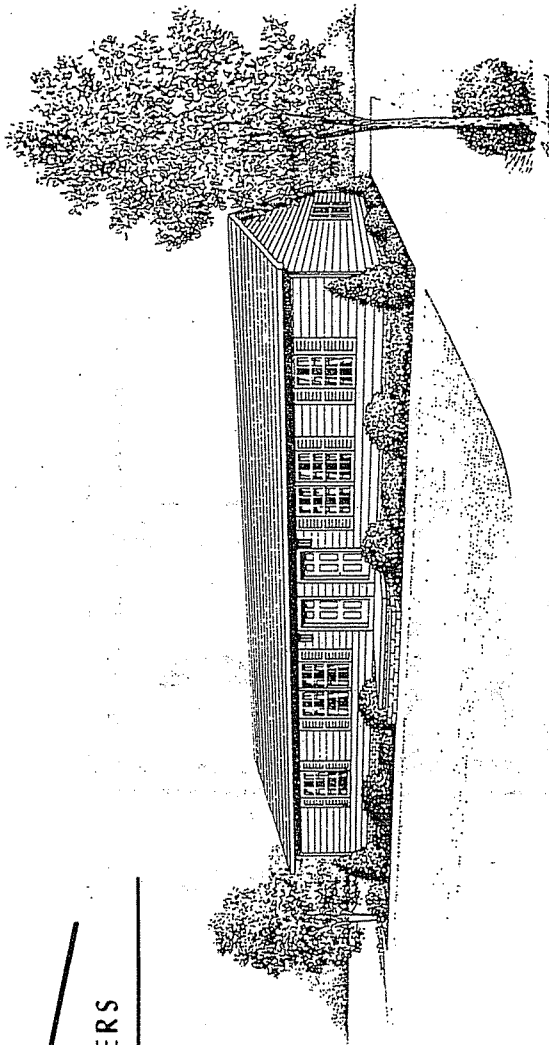


 PREMIER BUILDERS



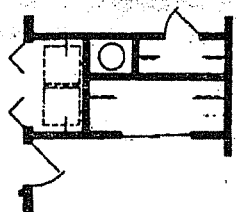
Duplex Series



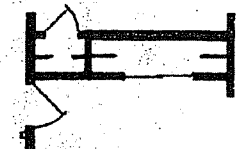


PLAN #654 • DUPLEX SERIES • 24'x60' • RANCH • TWO BEDROOM
(ALSO AVAILABLE IN 26' AND 28' WIDTHS)

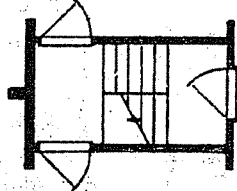
13'2"	12'5"	11'3"
13'2"	12'5"	11'3"



CRAWL SPACE OPTION
FOR PLAN #654, 656, 658



RAISED RANCH OPTION FOR
PLAN #654 WITH
MODIFICATION TO BR#1
CLOSET

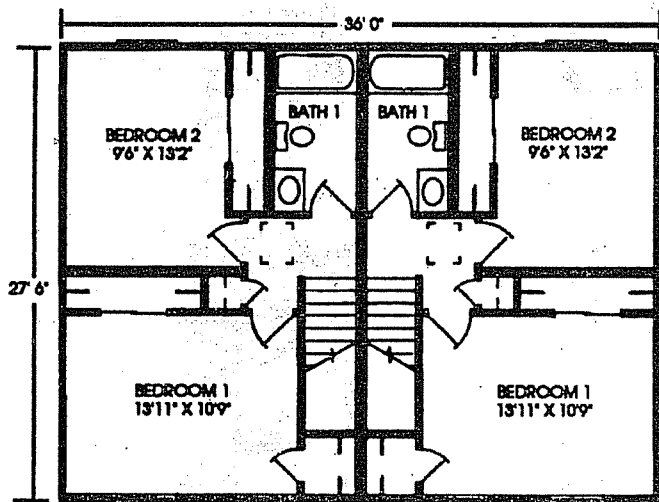


RAISED RANCH OPTION FOR
PLAN #656 AND PLAN #658

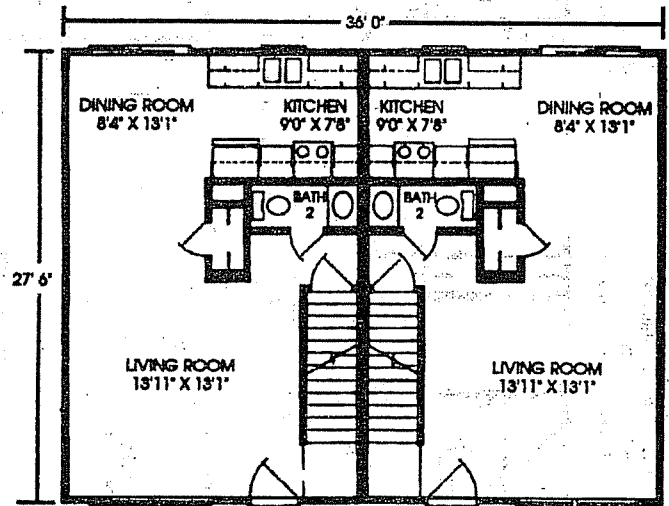
Duplex Series



TWO STORY DESIGN



UPPER LEVEL



LOWER LEVEL

PLAN #660 • DUPLEX SERIES • TWO STORY • TWO BEDROOM
26'x36' / 28'x36' • ONE AND ONE-HALF BATHS



1567 PA Route 442 East Suite #3
P.O. Box 337 • Muncy, PA 17756-0337
570-546-8915 • www.premier-builders.com



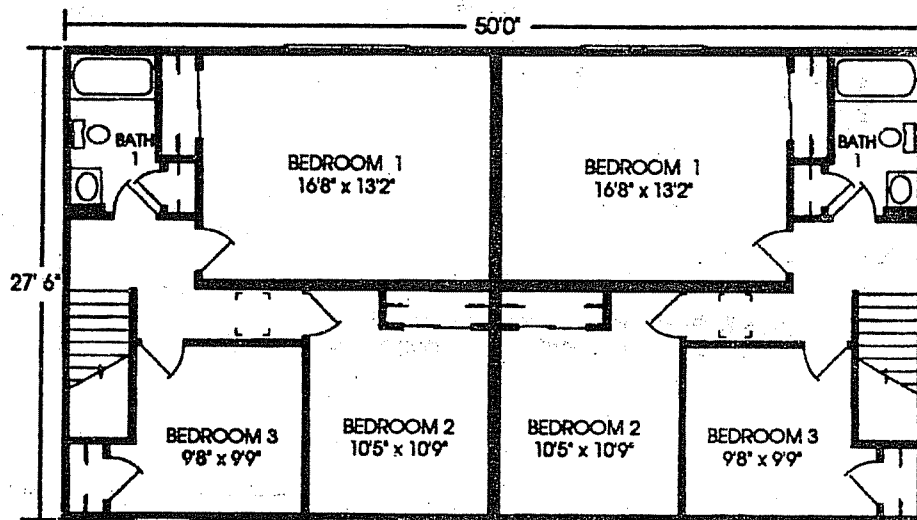
YOUR BUILDER/DEVELOPER

THE BUILDER/DEVELOPER IS AN INDEPENDENT BUSINESSMAN, NOT AN AGENT OF PREMIER BUILDERS. From time to time, Builder/Developer may perform service work at the request of PREMIER Builders, but in doing so Builder/Developer is still an independent contractor and is alone responsible for the quality of his work. PREMIER BUILDERS SHALL HAVE NO RESPONSIBILITY OR LIABILITY FOR ANY ACT OR OMISSION OF BUILDER/DEVELOPER OR ANY MATERIAL PROVIDED BY BUILDER/DEVELOPER, UNDER ANY CIRCUMSTANCES.

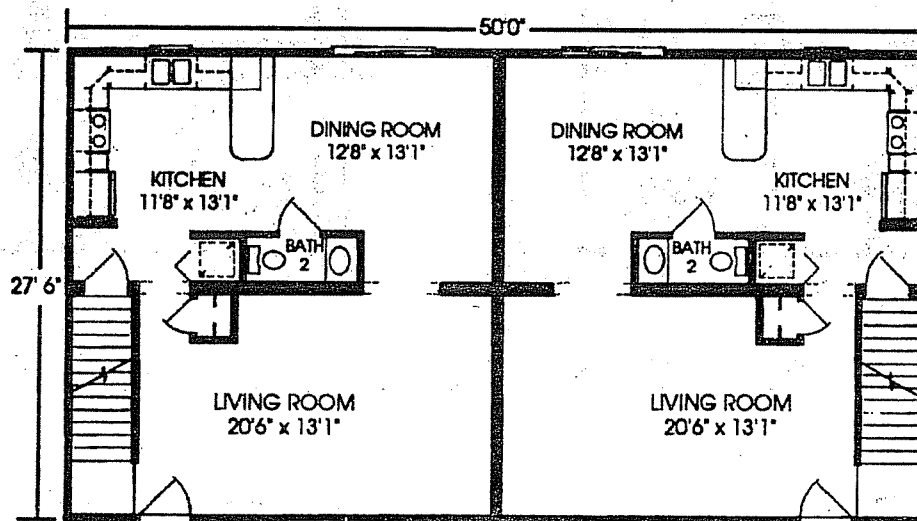
(2.5M) SVP 2/93

Due to our continuing program of Product Improvement, Plans, Specifications, Materials and Prices are subject to change without notice.

TWO STORY DESIGN



UPPER LEVEL

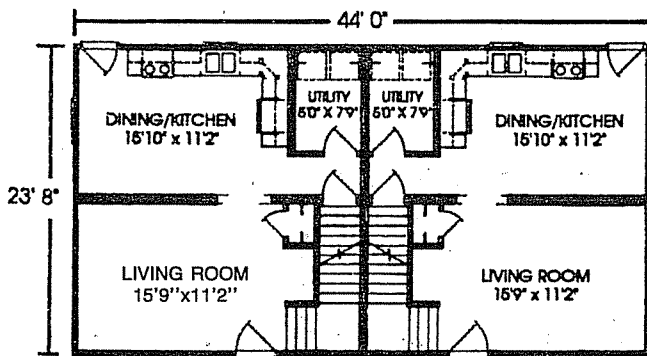


LOWER LEVEL

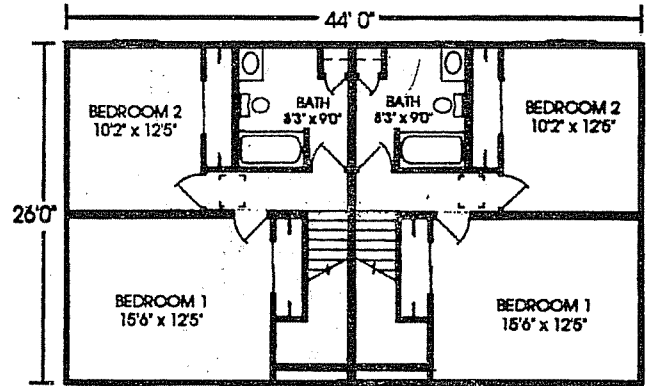
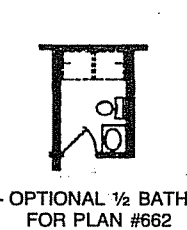
PLAN #665 • DUPLEX SERIES • TWO STORY • 28' x 50' / 28' x 50'
TWO BEDROOM • ONE AND ONE-HALF BATHS

Duplex Series

TWO STORY DESIGNS

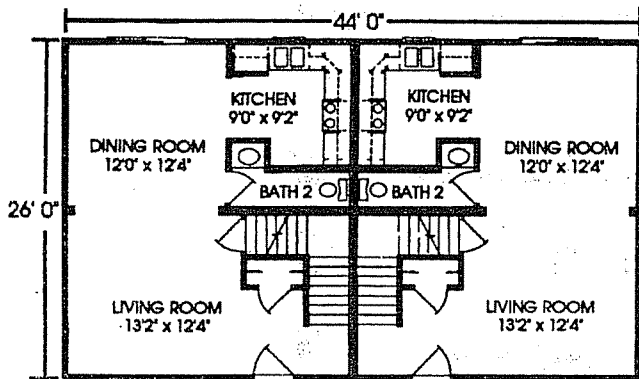


LOWER LEVEL

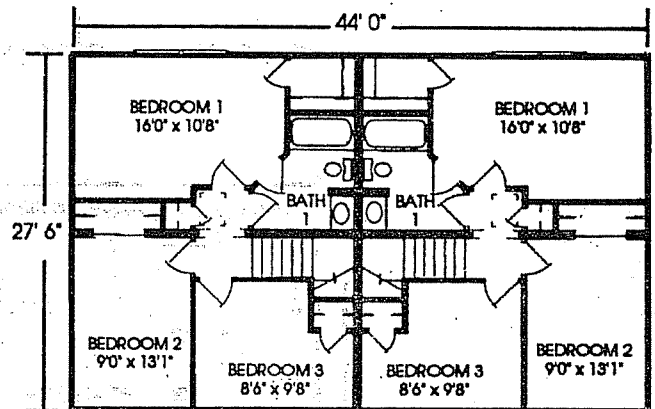


UPPER LEVEL

PLAN #662 • DUPLEX SERIES • TWO STORY • 24'x44' / 26'x44' • TWO BEDROOM
(UPPER LEVEL IS CANTILEVERED 14" OVER LOWER LEVEL FRONT & BACK)



LOWER LEVEL



UPPER LEVEL

PLAN #663 • DUPLEX SERIES • TWO STORY • 26'x44' / 28'x44' • THREE BEDROOM • ONE AND ONE-HALF BATHS
(UPPER LEVEL IS CANTILEVERED 9" OVER LOWER LEVEL FRONT & BACK)



1567 PA Route 442 East Suite #3
P.O. Box 337 • Muncy, PA 17756-0337
570-546-8915 • www.premier-builders.com

MODULAR
BUILDING SYSTEMS ASSOCIATION
BUILDING FOR TOMORROW

YOUR BUILDER/DEVELOPER

THE BUILDER/DEVELOPER IS AN INDEPENDENT BUSINESSMAN, NOT AN AGENT OF PREMIER BUILDERS. From time to time, Builder/Developer may perform service work at the request of PREMIER Builders, but in doing so Builder/Developer is still an independent contractor and is alone responsible for the quality of his work. PREMIER BUILDERS SHALL HAVE NO RESPONSIBILITY OR LIABILITY FOR ANY ACT OR OMISSION OF BUILDER/DEVELOPER OR ANY MATERIAL PROVIDED BY BUILDER/DEVELOPER, UNDER ANY CIRCUMSTANCES.

(2.5M) SVP 2/93

Due to our continuing program of Product Improvement, Plans, Specifications, Materials and Prices are subject to change without notice.